



Air Conditioning Systems

MSZ-FH SERIES
PRODUCT FLYER



MSZ-FH Series

The new MSZ-FH series is the culmination of our air-cleaning, motion-sensor and airflow technologies, and represent our efforts to create an air conditioner that put No.1 Priority on healthy living.



Small Room



MSZ-FH25VE-A1

Cooling Capacity: 2.5kW (min 1.4kW~max 3.5kW)

Cooling efficiency -EER: 4.90/AEER:4.60

Heating Capacity: 3.2kW (min 1.8W~max5.5kW)

Heating efficiency - COP: 5.52/ACOP 5.21

MSZ-FH35VE-A1

Cooling Capacity: 3.5kW (min 0.8kW~max 4.0kW)

Cooling efficiency - EER: 4.07/AEER:3.92

Heating Capacity: 4.0kW (min 1.0W~max6.3kW)

Heating efficiency - COP: 5.00/ACOP 4.80

Medium Room



MSZ-FH50VE-A1

Cooling Capacity: 5.0kW (min 1.9kW~max 6.0kW)

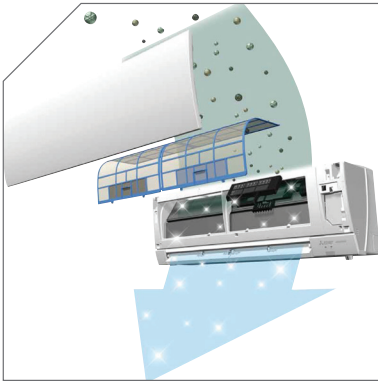
Cooling efficiency - EER: 3.62/AEER:3.54

Heating Capacity: 6.0kW (min 1.7W~max8.7kW)

Heating efficiency - COP: 4.05/ACOP 3.96

Features

- » Econo Cool
- » Auto/Double Vane
- » Anti-Mould Filter
- » Pure White
- » Compact
- » 24-Hour Timer
- » Auto Restart
- » Quick Clean
- » Auto Change Over
- » Weekly Timer
- » Vertical & Horizontal Swing
- » Dual Split Vane Technology
- » DC Inverter
- » Operating Temperature range
Cooling at -10°C ~ 46°C
Heating at -15°C ~ 24°C



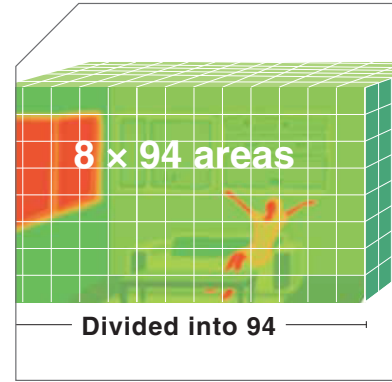
Plasma Filter

The Plasma Filter System is an advanced, multi-stage filtration system designed to effectively neutralise contaminants such as allergens, viruses and bacteria ensuring the circulation of fresh, clean air back into the room.



Quiet Operation

We recognise that noise affects comfort, so we constantly work to make our air conditioners as quiet as possible. With improvements to our fan blades combined with a new grille shape to our outdoor unit it's even quieter when in low noise mode. We want you to feel the warmth, not hear it.



3D i-See Sensor

The FH Series is equipped with 3D i-see Sensor, an infrared-ray sensor that measures the temperature at distant positions. While moving to the left and right, eight vertically arranged sensor elements analyze the room temperature in three dimensions.



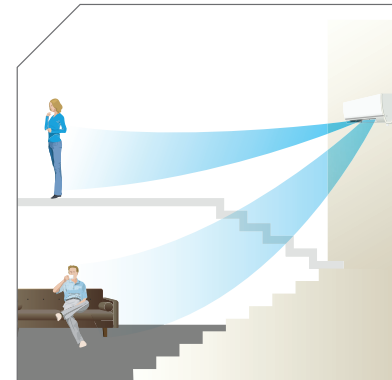
Natural Flow

To Create "healthy" airflow, the most important aspect is that the flow of air feels natural. Mitsubishi Electric's solution to this is Natural Flow, only possible thanks to our technology that freely and flexibly controls airflow.



Energy Efficient

We strive for the perfect balance of performance, reliability, low power consumption and a long operational life span for all our products. The airflow speed and temperature are adjusted to prevent over heating/cooling, thereby eliminating the consumption of excessive electricity.



Dual Split Vane Technology

The unique dual split vane design allows airflow to be customised to suit different areas of the room, by independently directing air upwards, downwards or to the side. This flexibility can also prevent air from striking obstacles or direct air to areas that require additional heating or cooling. Dual split vane airflow is ideal for multi-level hallways in homes.



Wi-Fi CONTROL

Wi-Fi Connectable*

- » View & control from anywhere in the world
- » Enhance energy savings
- » Set up 7 day weekly schedule
- » Wireless connection using WPS
- » Develop operating rules
- » Control multiple units

Introducing Wi-Fi Control for Split systems. Unlock the door to smarter heating and cooling, for total home comfort. This innovative technology connects your Mitsubishi Electric wall mounted air conditioner to your smart-phone, tablet or Online account, giving you the freedom to fully control each unit on-the-go via an Internet connection from anywhere in the world. Additional upgrade adapter MAC-558IF-E required

Specifications

Indoor Unit			MSZ-FH25VE - A1	MSZ-FH35VE - A1	MSZ-FH50VE - A1	
Outdoor Unit			MUZ-FH25VE - A1	MUZ-FH35VE - A1	MUZ-FH50VE - A1	
Cooling	Capacity (min.-max.)	kW	1.4-2.5-3.5	0.8-3.5-4.0	1.9-5.0-6.0	
	Input (min.-max.)	kW	0.21-0.51-0.90	0.17-0.86-1.15	0.41-1.38-2.25	
	AEER/EER	kW	4.60/4.90	3.92/4.07	3.54/3.62	
	Star Rating		5.5	3.5	2.5	
	Running Current	A	2.7	4.0	6.1	
	Sound Pressure	IN	dB(A)	23-29-36-42	24-29-36-42	31-35-39-44
		OUT	dB(A)	60	61	64
Air Volume(IN)	L/S	78-193	78-193	123-207		
Heating	Capacity (min.-max.)	kW	1.8-3.2-5.5	1.0-4.0-6.3	1.7-6.0-8.7	
	Input (min.-max.)	kW	0.28-0.58-2.0	0.27-0.8-2.0	0.43-1.48-3.06	
	ACOP/COP	kW	5.21/5.52	4.80/5.00	3.96/4.05	
	Star Rating		6.0	5.0	3.5	
	Running Current	A	2.9	3.8	6.5	
	Sound Pressure	IN	dB(A)	24-29-36-44	24-29-36-44	29-34-39-46
		OUT	dB(A)	61	62	-
Air Volume(IN)	L/S	78-220	78-220	120-243		
Starting Current	A	2.9	4	6.5		
Max. Running Current	A	9.6	10	14		
Indoor Unit	Input Cooling/Heating	W	29/29	29/29	31/31	
	Dimensions (HxWxD)	mm	305(+17)*925*234			
	Weight	kg	13.5			
Outdoor Unit	Dimensions (HxWxD)	mm	550*800*285	880*840*330		
	Weight	kg	37	55		
	Breaker Size	A	10	10	16	
Ext.Piping	Diameter (Gas/Liquid)	mm	9.52/6.35	9.52/6.35	12.7/6.35	
	Max.Length/Height	m	20/12	20/12	30/15	
Guaranteed Operating Range (Outdoor)	Cooling		-10~46	-10~46	-10~46	
	Heating		-15~24	-15~24	-15~24	



For more information on this product please scan the QR Code.



MitsubishiElectric.com.au